

PLAT NO. 1620 184 AM

PLAT OF

GRAND VIEW AT REMINGTON RANCH SUBDIVISION

LYING IN TRACT 4 OF CERTIFICATE OF SURVEY NO. 1820, TRACT 5 A.M. AND TRACT 6 A.M. OF CERTIFICATE OF SURVEY NO. 1820, 7TH AMENDED, LOCATED IN THE NE1/4 AND SE1/4 OF SECTION 28, T15S, R20E, P1.M., CARBON COUNTY, MONTANA

SUBDIVIDED BY: RED LODGE SURVEYING, INC.
 R.C. 48 BOX 2025B
 RED LODGE, MT 59028
 DURING APRIL OF 2004
 LANDOWNER: WESTERN INVESTMENTS, INC.

SURVEYOR'S NOTE:
 Pursuant to ABN 8.2A(2011)6, The surveyor shall set all monuments prior to the filing of the plat except those monuments that will be determined by installation of improvements. The surveyor shall set all of any improvements on or before December 31, 2004.

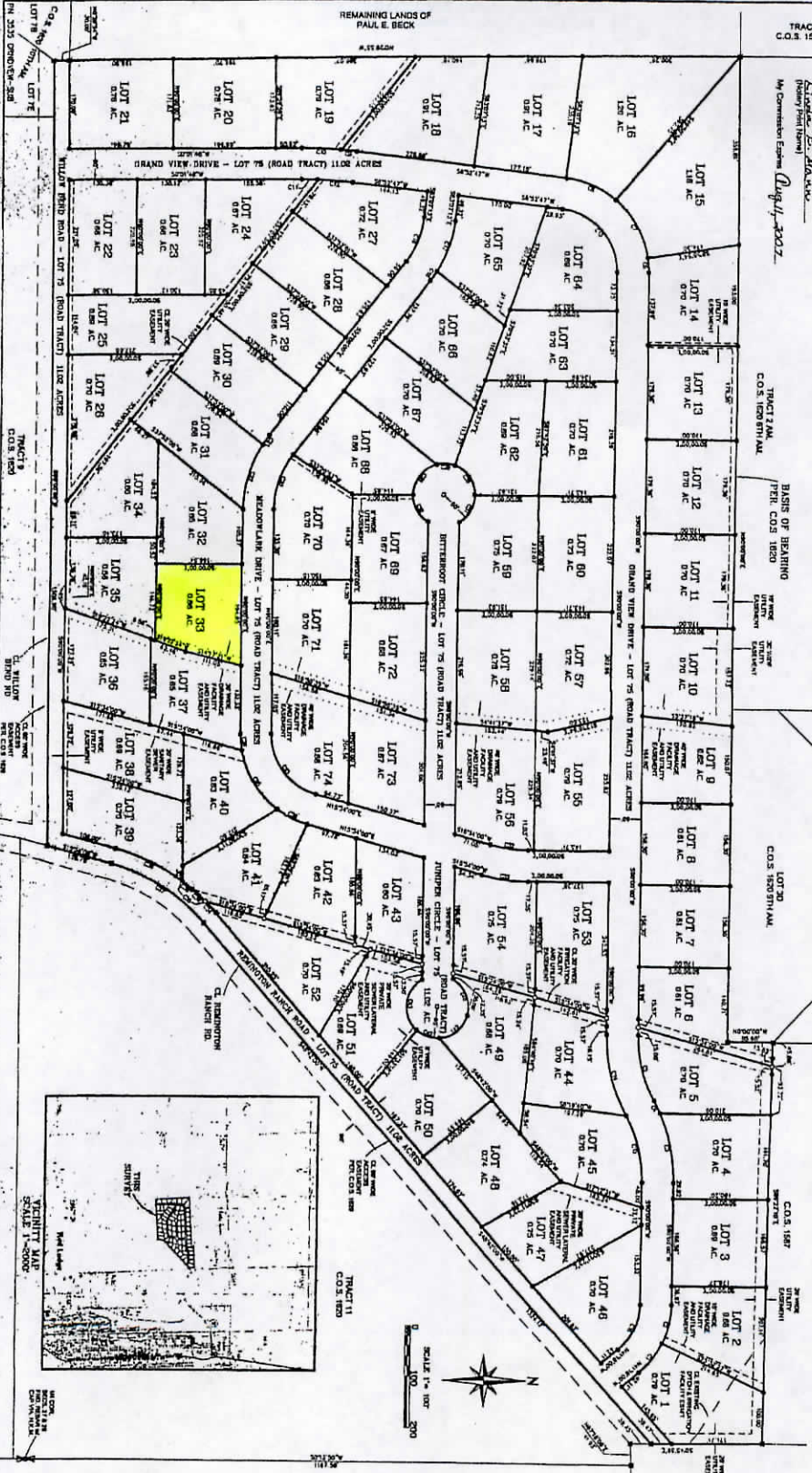


SHARDON CERTIFICATION:
 I, Red Lodge Surveying, Inc., the Surveyor named in the attached Plat was performed by me or under my direct supervision.
 Dated this 22nd day of September, 2004.
Red Lodge Surveying, Inc.
 Montana Reg. Number 52183

SHARDON CERTIFICATION:
 I, Red Lodge Surveying, Inc., the Surveyor named in the attached Plat was performed by me or under my direct supervision.
 Dated this 22nd day of September, 2004, at 12:12 o'clock, P.M.
Red Lodge Surveying, Inc.
 Montana Reg. Number 52183

STATE OF MONTANA
 County of Carbon
 This instrument was acknowledged before me this 22nd day of September, 2004, by Red Lodge Surveying, Inc. finding Red Lodge Surveying, Inc. to be the true and lawful owner of the above described land.
Richard E. Walker
 My Commission Expires August 11, 2007

TRACT A
 C.O.S. 1596 AG.



SCALE 1" = 100'

LEGEND

- SET NO. 5 BEMAR
- VIA RED LODGE SURVEYING, INC.
- AND UNDERSIGNED P.S.
- FOUND 1 LG. ALUM. CAP
- VIA BRANTON (8/19/05)
- NO MONUMENT SET

CHIRRE TABLE

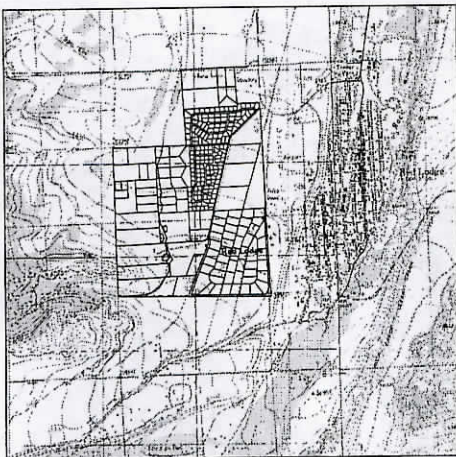
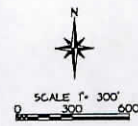
| LOT | ACRES | AREA | PERCENT |
|-----|-------|------|---------|
| 1 | 0.10 | 0.10 | 0.17 |
| 2 | 0.10 | 0.10 | 0.17 |
| 3 | 0.10 | 0.10 | 0.17 |
| 4 | 0.10 | 0.10 | 0.17 |
| 5 | 0.10 | 0.10 | 0.17 |
| 6 | 0.10 | 0.10 | 0.17 |
| 7 | 0.10 | 0.10 | 0.17 |
| 8 | 0.10 | 0.10 | 0.17 |
| 9 | 0.10 | 0.10 | 0.17 |
| 10 | 0.10 | 0.10 | 0.17 |
| 11 | 0.10 | 0.10 | 0.17 |
| 12 | 0.10 | 0.10 | 0.17 |
| 13 | 0.10 | 0.10 | 0.17 |
| 14 | 0.10 | 0.10 | 0.17 |
| 15 | 0.10 | 0.10 | 0.17 |
| 16 | 0.10 | 0.10 | 0.17 |
| 17 | 0.10 | 0.10 | 0.17 |
| 18 | 0.10 | 0.10 | 0.17 |
| 19 | 0.10 | 0.10 | 0.17 |
| 20 | 0.10 | 0.10 | 0.17 |
| 21 | 0.10 | 0.10 | 0.17 |
| 22 | 0.10 | 0.10 | 0.17 |
| 23 | 0.10 | 0.10 | 0.17 |
| 24 | 0.10 | 0.10 | 0.17 |
| 25 | 0.10 | 0.10 | 0.17 |
| 26 | 0.10 | 0.10 | 0.17 |
| 27 | 0.10 | 0.10 | 0.17 |
| 28 | 0.10 | 0.10 | 0.17 |
| 29 | 0.10 | 0.10 | 0.17 |
| 30 | 0.10 | 0.10 | 0.17 |
| 31 | 0.10 | 0.10 | 0.17 |
| 32 | 0.10 | 0.10 | 0.17 |
| 33 | 0.10 | 0.10 | 0.17 |
| 34 | 0.10 | 0.10 | 0.17 |
| 35 | 0.10 | 0.10 | 0.17 |
| 36 | 0.10 | 0.10 | 0.17 |
| 37 | 0.10 | 0.10 | 0.17 |
| 38 | 0.10 | 0.10 | 0.17 |
| 39 | 0.10 | 0.10 | 0.17 |
| 40 | 0.10 | 0.10 | 0.17 |
| 41 | 0.10 | 0.10 | 0.17 |
| 42 | 0.10 | 0.10 | 0.17 |
| 43 | 0.10 | 0.10 | 0.17 |
| 44 | 0.10 | 0.10 | 0.17 |
| 45 | 0.10 | 0.10 | 0.17 |
| 46 | 0.10 | 0.10 | 0.17 |
| 47 | 0.10 | 0.10 | 0.17 |
| 48 | 0.10 | 0.10 | 0.17 |
| 49 | 0.10 | 0.10 | 0.17 |
| 50 | 0.10 | 0.10 | 0.17 |
| 51 | 0.10 | 0.10 | 0.17 |
| 52 | 0.10 | 0.10 | 0.17 |
| 53 | 0.10 | 0.10 | 0.17 |
| 54 | 0.10 | 0.10 | 0.17 |
| 55 | 0.10 | 0.10 | 0.17 |
| 56 | 0.10 | 0.10 | 0.17 |
| 57 | 0.10 | 0.10 | 0.17 |
| 58 | 0.10 | 0.10 | 0.17 |
| 59 | 0.10 | 0.10 | 0.17 |
| 60 | 0.10 | 0.10 | 0.17 |

REMINGTON RANCH COMPOSITE

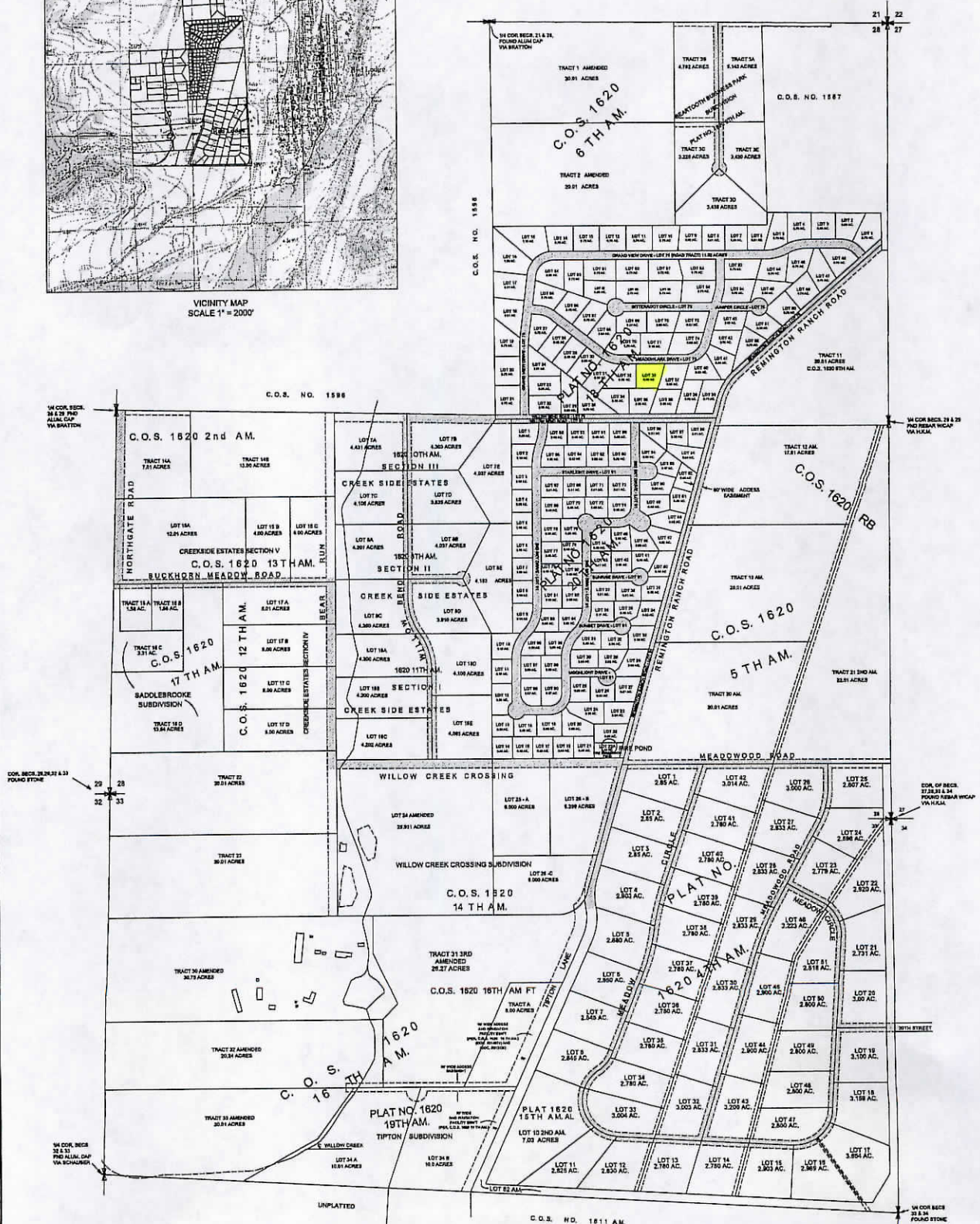
PREPARED BY RED LODGE SURVEYING INC.

REVISED JULY, 2011

PROJECT 2246



VICINITY MAP
SCALE 1" = 2000'



RED LODGE SURVEYING, INC.
HC 49 BOX 3035B
RED LODGE, MT 59068
(406) 446-1860

| | | | |
|-------------------|------------|------------|-----|
| DATE: 8-29-01 | REVISIONS: | DATE: | BY: |
| SCALE: 1"=300' | 5 | FEB. 2006 | BGG |
| CHECKED BY: NAB | 6 | APRIL 2008 | BGG |
| DRAFTED BY: YMK | 7 | JULY 2011 | YMK |
| PROJECT NO.: 2246 | | | |

| | |
|-----------------------------|---------|
| PREPARED FOR: | SHEET 1 |
| REMINGTON RANCH ASSOCIATION | OF 1 |