

1727

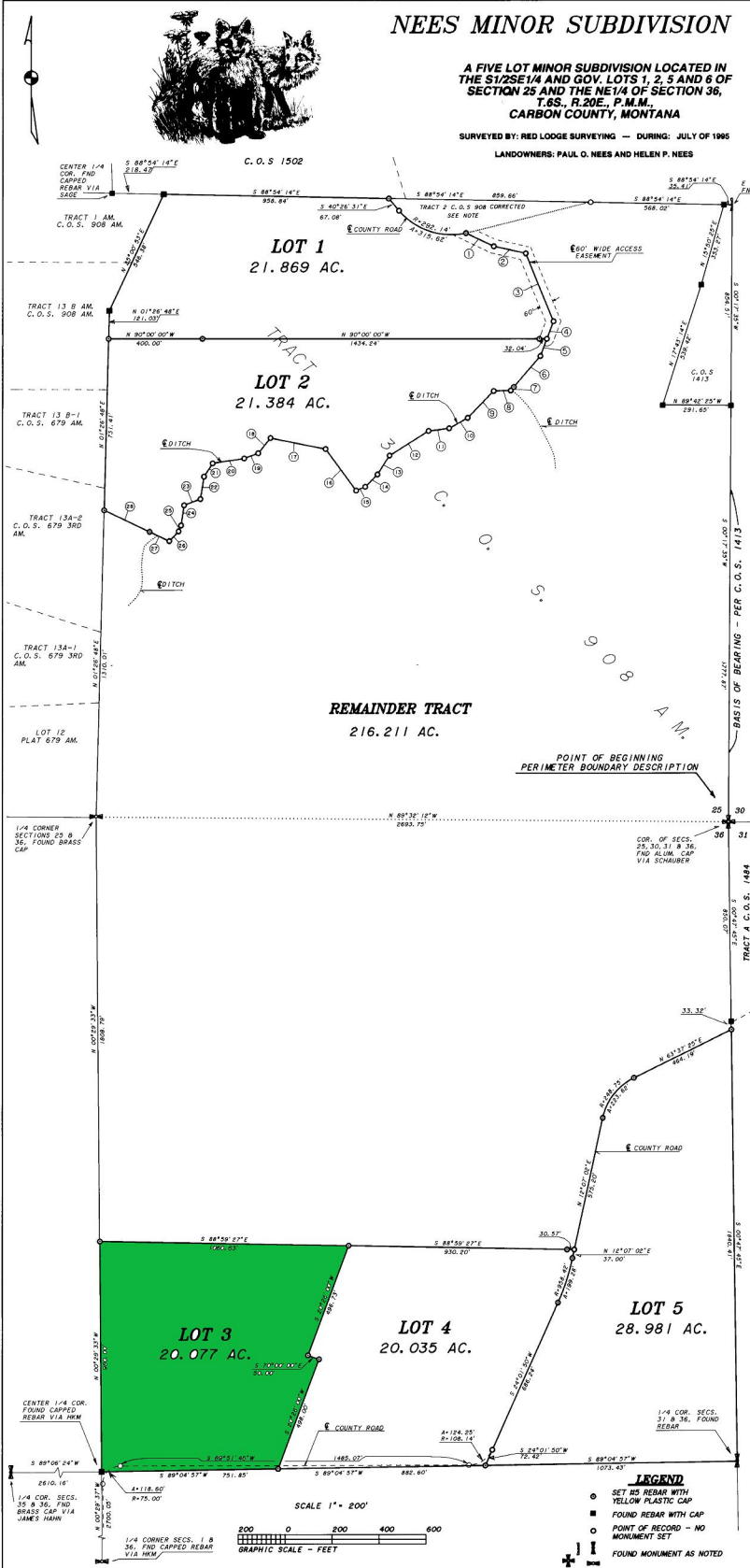
1727

NEES MINOR SUBDIVISION

PLAT NO #1727

A FIVE LOT MINOR SUBDIVISION LOCATED IN THE S1/2SE1/4 AND GOV. LOTS 1, 2, 5 AND 6 OF SECTION 25 AND THE NE1/4 OF SECTION 36, T.6S., R.20E., P.M.M., CARBON COUNTY, MONTANA

SURVEYED BY: RED LODGE SURVEYING — DURING: JULY OF 1995
 LANDOWNERS: PAUL G. NEES AND HELEN P. NEES



LEGAL DESCRIPTION:

PERIMETER BOUNDARY DESCRIPTION: (INCLUDING REMAINDER TRACT)

A tract of land located in the S1/2NE1/4 and Government Lots 1, 2, 5 and 6 of Section 25 and the NE1/4 of Section 36, T.6S., R.20E., P.M.M., Carbon County, Montana.

Beginning at the northeast corner of said Section 36; thence S 00°47'45"E, a distance of 2723.90 feet to the east quarter corner of Section 36; thence S 89°04'57"W, a distance of 2707.88 feet to the center quarter corner of Section 36; thence N 00°29'33"W, a distance of 2788.79 feet to the quarter corner common to Sections 25 and 36; thence N 01°02'01"E, a distance of 2162.45 feet; thence N 23°00'53"E, a distance of 546.38 feet; thence S 88°54'14"E, a distance of 2386.50 feet; thence S 15°50'25"W, a distance of 353.27 feet; thence S 17°43'14"W, a distance of 538.42 feet; thence S88°42'23"E, a distance of 291.65 feet; thence S 00°17'35"W, a distance of 1777.87 feet to the point of beginning. Containing 288.657 acres, being subject to easements as shown and/or of record and all according to the attached plat.

LANDOWNERS CERTIFICATION:

We do hereby certify that we have caused to be surveyed, subdivided and patrolled into lots the property as shown and described on the plat hereto annexed and that this subdivision complies with all conditions of the Montana Subdivision and Platting Act.

Paul G. Nees & Helen P. Nees

NOTARY:

Subscribed and sworn to before me this 23 day of August

19 95

David E. Nease
Notary Public for the State of Montana

My Commission Expires: Aug 11, 1999

TREASURER'S CERTIFICATION:

I hereby certify that all real property taxes and special assessments assessed

TREASURER'S CERTIFICATION:

I hereby certify that all real property taxes and special assessments assessed and levied on the land to be divided have been paid.

John S. Mordue
John Mordue
Carbon County Treasurer

CERTIFICATE OF PLAT APPROVAL:

The County Commission of Carbon County, Montana does hereby certify that it has examined this subdivision plat and having found the same to conform to law, approves it for recording.

Dated this 10th day of October, 1995

David E. Nease
Chairman - Carbon County Board of Commissioners

CLERK AND RECORDER:

Filed on the 20th day of Oct 1995

at 2:47 o'clock A.M.

Roger Newman
Carbon County Clerk and Recorder

SURVEYOR'S CERTIFICATION:

I hereby certify that the attached plat is a true representation of a survey performed by me or under my direct supervision during July of 1995.

Neil A. Bratton, Jr., PLS
Montana Reg. Number 9019LS