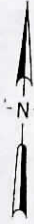


RED LODGE ESTATES

AMENDED PLAT OF TRACTS - Q, U, L, S & M OF CERTIFICATE OF SURVEY NO. 483
SITUATED IN THE W 1/2 OF SECTION 9, T-8S, R-20E, PM.M.
CARBON COUNTY, MONTANA

FOR MR. JOHN HARNISH
BY: MUELLER ENGINEERING, BILLINGS, MONTANA
SCALE: 1" = 100' JUNE - 1969



LOT AREAS IN SQ. FT.

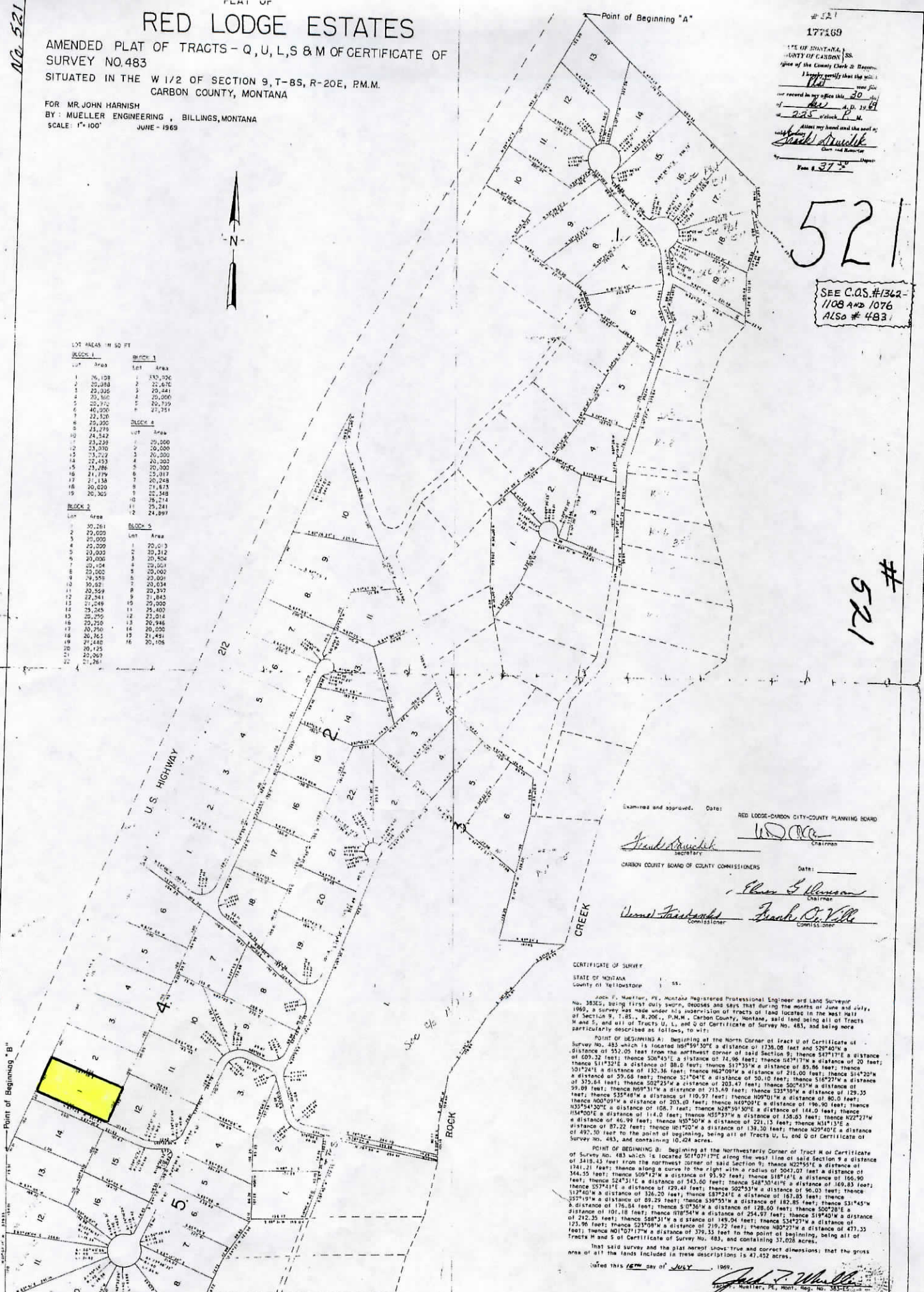
Block	Lot	Area	
BLOCK 1	1	36,138	
	2	25,388	
	3	25,326	
	4	25,360	
	5	22,372	
	6	40,250	
	7	22,520	
	8	25,200	
	9	24,279	
	10	24,342	
BLOCK 2	1	33,026	
	2	25,676	
	3	25,441	
	4	25,000	
	5	20,739	
	6	27,751	
	BLOCK 3	1	20,000
		2	20,000
		3	20,000
		4	20,000
5		20,000	
6		20,000	
7		20,000	
8		20,000	
9		20,000	
10		20,000	
BLOCK 4	1	20,000	
	2	20,000	
	3	20,000	
	4	20,000	
	5	20,000	
	6	20,000	
	7	20,000	
	8	20,000	
	9	20,000	
	10	20,000	
BLOCK 5	1	20,000	
	2	20,000	
	3	20,000	
	4	20,000	
	5	20,000	
	6	20,000	
	7	20,000	
	8	20,000	
	9	20,000	
	10	20,000	

No. 521

521

SEE C.A.S. #1342-1108 AND 1076
ALSO # 483

521



Examined and approved. Date: RED LODGE-CARBON CITY-COUNTY PLANNING BOARD
Frank Strickland Secretary
W.D. ... Chairman
CARBON COUNTY BOARD OF COUNTY COMMISSIONERS Date: _____
Oliver S. Hanson Chairman
Wm. Strickland Commissioner
Frank O. ... Commissioner

CERTIFICATE OF SURVEY
STATE OF MONTANA
County of Yellowstone

Jack F. Mueller, P.E., Montana Registered Professional Engineer and Land Surveyor No. 3822, being first duly sworn, deposes and says that during the months of June and July, 1969, a survey was made under his supervision of tracts of land located in the West half of Section 9, T-8S, R-20E, P.M.M., Carbon County, Montana, said land being all of Tracts M and S, and all of Tracts U, L, and O of Certificate of Survey No. 483, and being more particularly described as follows, to-wit:

POINT OF BEGINNING A: Beginning at the North Corner of Tract U of Certificate of Survey No. 483 which is located 180°59'30"E a distance of 1735.00 feet and S27°40'W a distance of 340.43 feet from the northeast corner of said Section 9; thence S41°17'E a distance of 609.32 feet; thence S05°43'E a distance of 74.96 feet; thence 124°17'W a distance of 20 feet; thence S11°52'E a distance of 80.00 feet; thence S17°55'W a distance of 85.86 feet; thence S01°24'E a distance of 132.36 feet; thence N62°09'W a distance of 216.00 feet; thence S14°20'W a distance of 59.68 feet; thence S21°04'E a distance of 210.10 feet; thence S16°27'W a distance of 375.64 feet; thence S02°25'W a distance of 203.47 feet; thence S02°41'W a distance of 59.09 feet; thence N97°31'W a distance of 213.49 feet; thence S23°39'W a distance of 129.35 feet; thence S25°46'W a distance of 110.97 feet; thence N09°01'W a distance of 196.90 feet; thence N00°09'W a distance of 108.10 feet; thence N28°30'30"E a distance of 144.00 feet; thence S35°54'20"E a distance of 144.00 feet; thence N55°27'W a distance of 136.25 feet; thence N22°27'W a distance of 46.99 feet; thence N05°50'W a distance of 221.13 feet; thence N14°13'E a distance of 82.22 feet; thence N01°20'W a distance of 139.30 feet; thence N20°40'E a distance of 492.30 feet to the point of beginning, being all of Tracts U, L, and O of Certificate of Survey No. 483, and containing 10.424 acres.

POINT OF BEGINNING B: Beginning at the Northwest Corner of Tract M of Certificate of Survey No. 483 which is located S61°02'17"E along the west line of said Section 9 a distance of 3410.43 feet from the northeast corner of said Section 9; thence N25°55'E a distance of 184.21 feet; thence along a curve to the right with a radius of 2047.07 feet a distance of 344.35 feet; thence S09°12'W a distance of 95.92 feet; thence S18°14'E a distance of 166.90 feet; thence S24°31'E a distance of 343.00 feet; thence S48°10'41"E a distance of 169.83 feet; thence S7°41'E a distance of 129.41 feet; thence S25°53'W a distance of 160.03 feet; thence S17°40'W a distance of 326.20 feet; thence S87°24'E a distance of 167.85 feet; thence S27°19'W a distance of 89.29 feet; thence S37°05'W a distance of 182.85 feet; thence S31°45'W a distance of 176.84 feet; thence S1°36'W a distance of 128.00 feet; thence S02°15'E a distance of 101.18 feet; thence S78°54'W a distance of 254.97 feet; thence S19°40'W a distance of 212.35 feet; thence S23°08'W a distance of 219.22 feet; thence S48°27'W a distance of 123.96 feet; thence S23°08'W a distance of 149.04 feet; thence S48°27'W a distance of 477.35 feet; thence N01°27'W a distance of 376.55 feet to the point of beginning, being all of Tracts M and S of Certificate of Survey No. 483, and containing 37.028 acres.

That said survey and the plat hereof shows true and correct dimensions; that the gross area of all the lands included in these descriptions is 47.452 acres.

Dated this 16th day of JULY, 1969.
Jack F. Mueller
Jack F. Mueller, P.E., Mont. Reg. No. 3822